



A suite of UA add-on functions that facilitate finishing plant operations throughput.

Work Orders

- Work Order types: Receive, Service, Maintenance, Make to Stock, Made to Order
- Customer & Vendor Inventories
- Dynamic Batches/ Lots
- Receive Work Orders
- Constructive Placement
 - Constructive Placement Reconciliation
 - Rails and OTR shipments
 - Works with any kind of material
- Unlimited steps in finishing operation

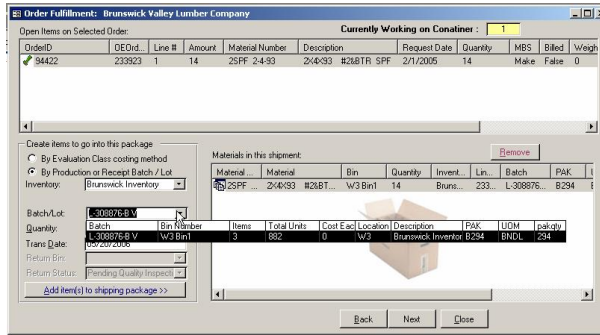
Process \ Schedule

W/O#	Type	Material #	QTY	QnFG	Description	DueDate	SchedulesDate	Work Order Status	CPD#	Priority
12597	REC		0		Lumber	1/21/2005		Order Acceptance	403439	
12641	REC		0		Adipic Acid	1/21/2005		Order Acceptance	05010007	
12639	REC		0		Adipic Acid	1/21/2005		Order Acceptance	05010004	
12643	REC		0		Adipic Acid	1/21/2005		Order Acceptance	05010011	
12599	REC		0		Lumber	1/21/2005		Order Acceptance	403439	
12593	REC		0		Lumber	1/22/2005		Order Acceptance	38719	
12645	REC		0		Adipic Acid	1/23/2005		Order Acceptance	05010012	
12647	REC		0		Adipic Acid	1/24/2005		Order Acceptance	05010013	

MaterialNumber	BatchDescription	Type	Quantity	DateCreated	Released	ReleaseDate	LastUpdated	ExpirationDate
AD2000	U-05030090-INOLEX CHEMICAL		22				3/8/2005	3/15/2005
AD2000	U-05030092-INOLEX CHEMICAL		22	3/8/2005			3/8/2005	3/15/2005
AD2000	U-05030094-INOLEX CHEMICAL		22				3/8/2005	3/15/2005
AD2000	U-05030095-INOLEX CHEMICAL		22	3/8/2005			3/8/2005	3/15/2005
AD2000	U-05030096-INOLEX CHEMICAL		1	3/8/2005			3/8/2005	3/15/2005
AD2000	U-05030097-INOLEX CHEMICAL		22	3/8/2005			3/8/2005	3/15/2005
AD2000	-04110571-INOLEX CHEMICAL		7	1/29/2005			1/29/2005	2/28/2005
2SYP 2-6-12	L-131481-BLOCH LUMBER CD		1152					

- Issue Sales/Service Orders
- Automatic or manual production orders to finish goods
- Maintain and manage inventories of customer raw goods, and finished goods
- Optionally charge warehouse fees based on age and qty of inventory materials
- Optionally issue automatic – service work orders to repack/freshen on hand inventory.
- Optional Automatic finished goods layer changes based on aging.
- Unlimited BOM
- Unlimited work stop routings

Ship

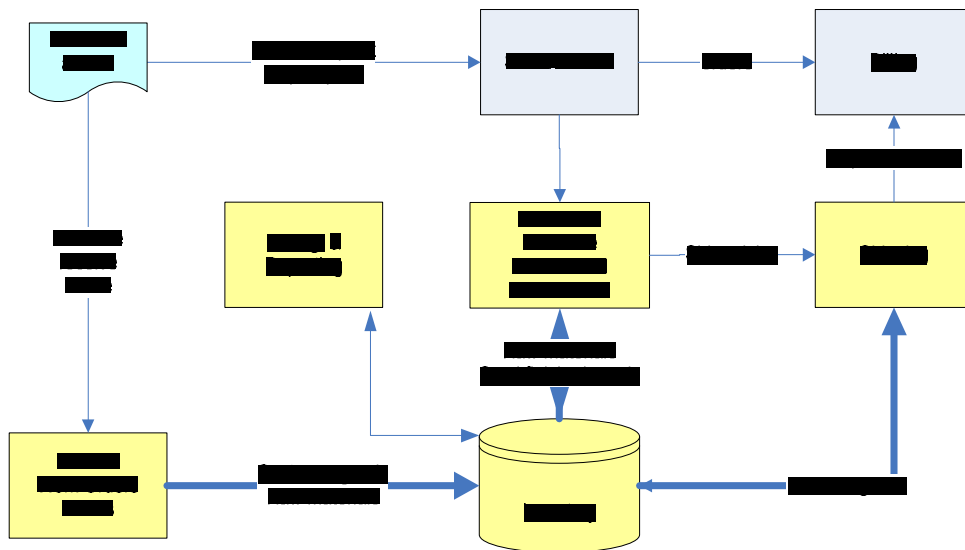


- Maintain – Ship information for your customers', customers
- Blind Ship – on behalf of your customer
- Draw from customer specific inventory/ batch
- Ship As completed or Ship complete
- Supports multiple carriers/loads from a single order
- Automatic back orders
- Print : Manifest, bill of lading and or packing slip
- Print Parts labels

Track

- Customer in-coming batch/lot usage/consumption
- Track finished goods
- Track worker or work group utilization
- Track contract/customer profitability
- Work Order routings: Paper or Screen based

Manage



- Schedule work (receive, production, maintenance work orders)
- Manage unlimited number of inventories (with and without asset value)
- Unlimited number of warehouses, storage units and bins.
- Reconcile inventories: by location
- Prepare work lists by WO type, date, product, work stop (station)

(yellow denotes enhanced process flow for finishing operations.)