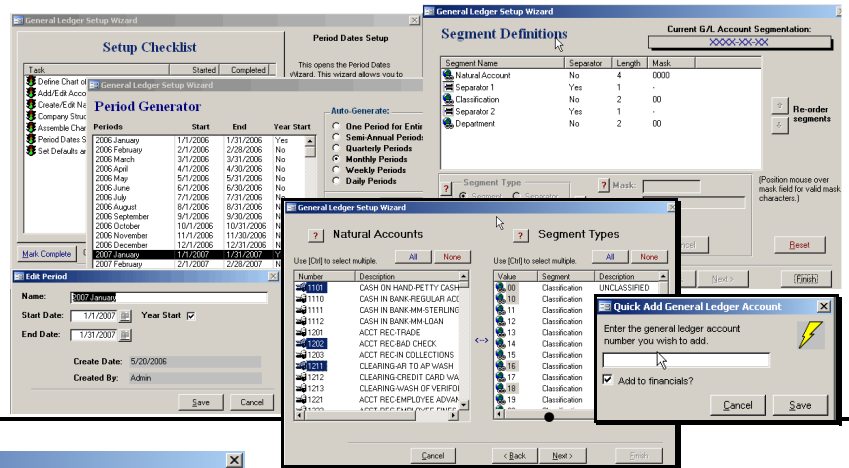
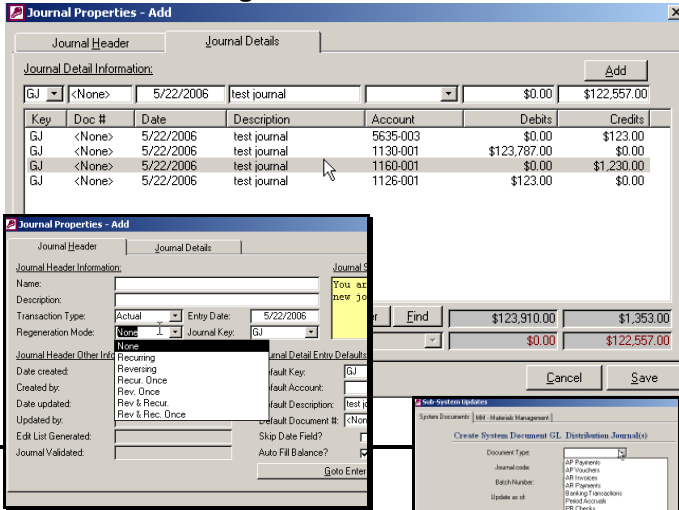


GL Setup

- Any number of segments alpha-numeric (regions, zones, divisions, departments, locations, projects, LOB etc)
- Robust period definition
- User controlled auto-generation of departmentalized accounts
- Quick utility to add new accounts on the fly



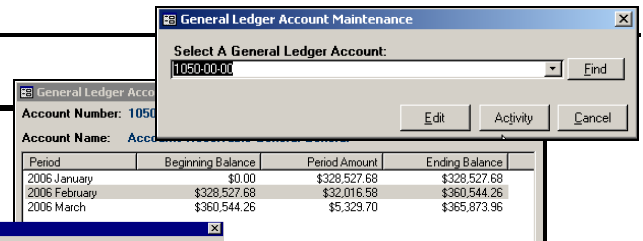
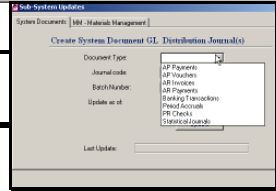
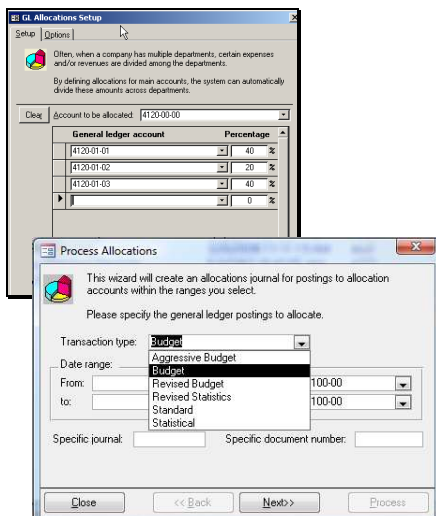
Journal Processing



- Add, edit journals
- Copy, paste, edit, enter tax disbursements, filter and find
- Work on journals in list or datasheet view
- Create and re-use template journals
- Unlimited transaction types: actual, budget, statistical
- Multiple regeneration modes
- Post journals based on document type, date and/or batch
- Import journals from spreadsheets, text files, databases etc.

Allocation and Drill Down

- Allocate Accounts by percentage

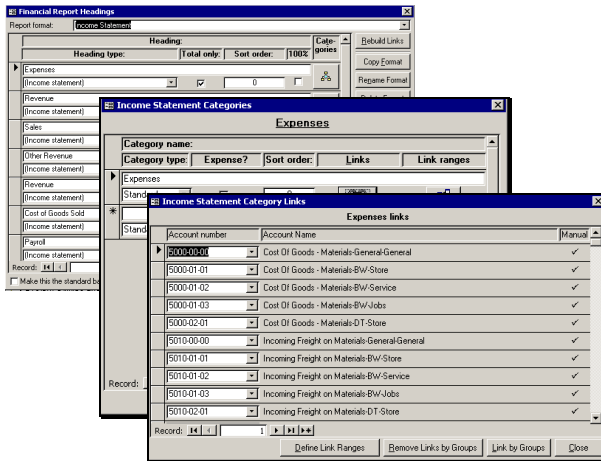


- Drill down on account, period, posting, see details

Supports: Windows XP & Vista

Easy to Use Financial Report Writer

- ✚ Any number of Income and or Balance Sheets, based on set up , copy, defaults
- ✚ Define labels, sub categories, totals
- ✚ Assign accounts by number, range or range plus exclusions
- ✚ Define ad-hoc financial reports
- ✚ Includes tools for documenting report definition and validating income and balance sheets to assure they do no miss or over count accounts.



Financial Reports

- ✚ Account Activity Comparison
- ✚ Account Listing
- ✚ Allocation Overview
- ✚ Extended Balance Sheet
- ✚ Extended Income Statement
- ✚ Income Statement by Segment
 - 8 Colum
- ✚ Income Statement Comparisons
 - Yr/yr ; 4 column
- ✚ General Ledger
- ✚ Journal Distributions
- ✚ Standard Balance Sheet
- ✚ Standard Income Statement
- ✚ Trial Balance
- ✚ Trial Balance Activity
- ✚ Trial Balance Working
- ✚ General Ledger Data Analysis
- ✚ Graph Account Activities by period
- ✚ Extended Report Definition
- ✚ Extended Report Definition Analysis

Account Activity Comparison By Period
Accounts 1005-00-00 to 5550-02-01
1/1/2006 to 1/31/2006 • Sorted by G/L Date

1005-00-00 • Cash on Hand-General-General							
Date	Date Period	Journal#	Document	Description	Variance	Budget	Actual
2006 January							
01/01/2006	02/23/2006	6	A1111	Cash on Hand		\$0.00	\$400.00

General Ledger Account Listing
Run Date: 5/23/2006 4:45:58 PM

Account Number	Account Name	Account Type
1005-00-00	Cash on Hand-General-General	Cash Accounts
1015-00-00	Bank Clearing-General-General	Bank Accounts
1020-00-00	BB&T Checking-General-General	Bank Accounts
1050-00-00	Account	Enter Report Parameters

Summary
Start Date: 2/1/2006
End Date: 2/28/2006
Account 100

Key	Journal #	Date	Document	Description
1005-00-00 Cash on Hand-General-General				
1020-00-00 BB&T Checking-General-General				
AP	14	5/18/2006	Summary	AP Distribution
AR	15	5/18/2006	Summary	AR Distribution
AR	15	5/18/2006	Summary	AR Distribution

Enter Report Parameters

Transaction types
Transaction type: Budget Actual
Standard

Ranges
Starting account: 1005-00-00 Start date: 11/1/2007
Ending account: 5550-02-01 End date: 11/30/2007

Filters
Filter type: Division Filter on: Lexington
Filter type: Department Filter on:
Filter type: Filter on:

Sort by: G/L Date Date Posted

Trial Balance with Activity
Start Date: 2/1/2006
End Date: 2/28/2006
Account 1005-00-00 to 5550-02-01
Transaction type: Standard
Run date: 5/23/2006 5:05:40 PM

Account Number	Beginning Balance	Debits	Credits	Activity	Ending Balance
1005-00-00	\$400.00	\$0.00	\$0.00	\$0.00	\$400.00
1020-00-00	\$148,112.22	\$416,176.63	\$573,546.49	(\$157,369.86)	(\$9,257.64)
1050-00-00	\$328,527.68				
1055-00-00	(\$11,620.52)				
1060-00-00	\$0.00				
1100-00-00	\$1,156,371.90				
1105-00-00	(\$44,926.47)				

Enter Date Information

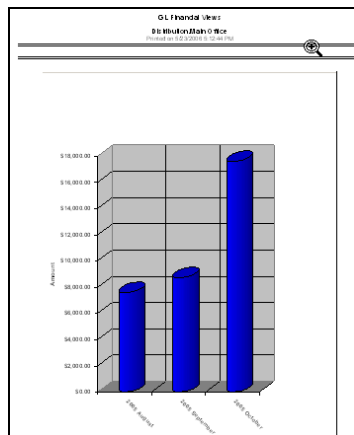
Report format: Income
 Format as a current to prior year comparison Format as individual columns

Columns 182 Period:	Column 1 Start Date:	Column 1 End Date:	Column 2 Start Date:	Column 2 End Date:
2007 January	1/1/2007	1/31/2007	2/1/2007	2/28/2007
2007 February	Column 1 Title:	2007 January	Column 2 Title:	2007 February

Columns 384 Period:	Column 3 Start Date:	Column 3 End Date:	Column 4 Start Date:	Column 4 End Date:
2007 March	3/1/2007	3/31/2007	4/1/2007	4/30/2007
2007 April	Column 3 Title:	2007 March	Column 4 Title:	2007 April

Filter type: Division Filter on: Lexington
Filter type: Department Filter on:
Filter type: Filter on:

Transaction type: Standard Show dollar amounts in: \$1.00s



FULL DETAIL BALANCE :
BALANCE SHEET FORM
Standard Transactions: Amounts in D

ASSETS

Cash on Hand-General-General		
Cash on Hand:		
BB&T Checking-General-General		
BB&T Checking		
Accounts Receivable-General-General		
Accounts Receivable:		
Allowance for Doubtful A/R-General-General		
Allowance for Doubtful A/R:	(\$11,620.52)	(\$11,620.52)
	(\$11,620.52)	(\$11,620.52)