

Integrated Equipment Sales, Parts, Service and optionally Rental

Order Entry

- Order Types
 - Standard
 - POS
 - Invoice & Order
 - Job Master
 - Job Change Order
 - Bill of Sale
 - Service Order
 - Recurring
- Configurations
 - QTY, Dimensional, Blend, Service
- Fees: Shop supplies, environmental, fuel surcharge
- Kits, Assemblies and Configurations
- Import: KITS, Work Orders

Work Order Management

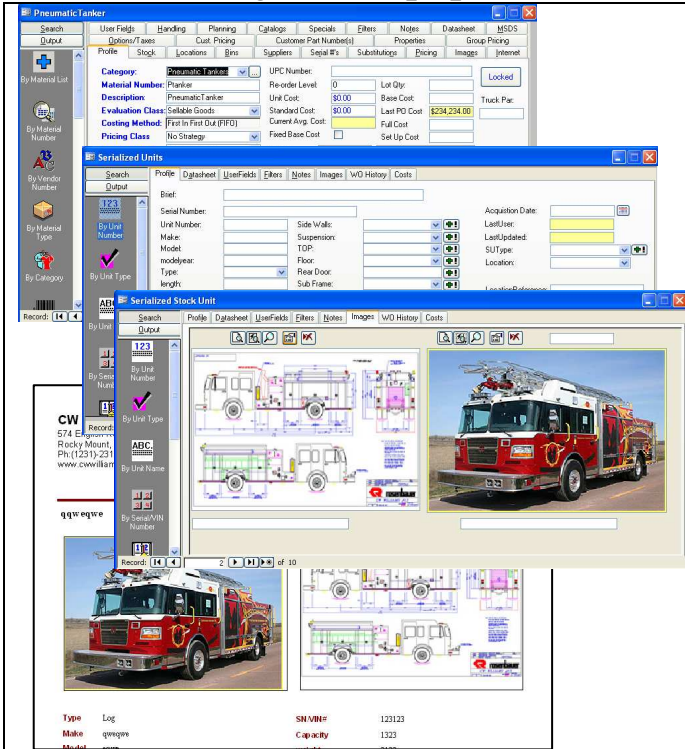
- Schedule, Track and assign work orders
- Barcode scan parts to work orders
- Barcode scan labor to work orders
- Edit and close work orders
- Work Order Types:
 - DEL – delivery
 - PUP – pick up
 - SVC – on site work
 - RPR – repair (billable)
 - MTC – maintenance (accrues to stock value)
 - INS - Parts + T&C

AR -Accounts Receivable

Manage customers, payments and amounts due efficiently with our powerful accounts receivable module. Features include bad debt management, aged statements, batch handling, flexible invoice printing, recurring receivables, flexible terms definition and comprehensive reporting. Automatically reverse NSF payments. A customer information screen maintains defaults such as taxing jurisdictions, multiple shipping addresses, finance charge groups, financial history and contact information. Also included are a finance charge calculator, multiple A/R deposit options and a tax liability section. Multiple bill-to, and ship-to taxation supported. Track Application of funds.

- Pre-Payment
- Payments / Split Payments
- POS Payments
- Batch Payments
- Finance Charges
- Collections
- Multiple AR Accounts
- Planned Invoices (un-Posted)

Integrated Equipment Sales, Parts, Service and optionally Rental



Materials - Materials Management (Inventory)

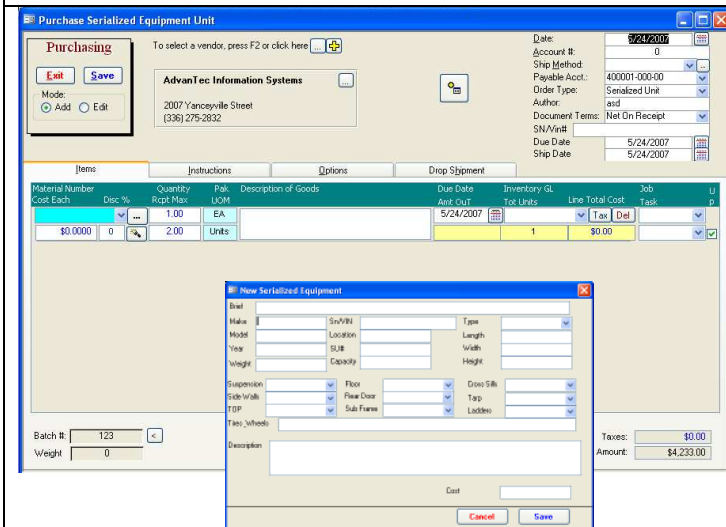
- Multiple warehouse, storage units and bins
- Bulk, batch/lot and serialized goods
- Item, customer, group and Line of business pricing
- Bulk update materials, and pricing
- Min Max stock levels by location by month
- Goods release, transfer, receive
- Transactional inventory by date, cost, document, layer
- Unlimited layers(e.g. ATP, WIP, Reserved, Pending Inspection, etc)

Process flow for Serialized large Units new or used.

Purchase Agreement → Materials Management → Specific Units → Brochures → Quotes → Sales → Invoices

Serialized unit manager :

- Equip. Details, Notes, Work History, unlimited images, embedded cost and margin
- Brochure, Profile Report
- Service History
- Maintains data for customer equipment, rental units and your stock new used, and consignment



PO -Purchasing

A complete, enterprise level order entry and inventory system to provide unparalleled control over storage location, costs, inventory descriptions, materials release criteria, storage criteria and much, much more. Define stock and inventory classes, track the movement of raw materials and goods for sale, allocate costs as LIFO, FIFO, average costs or fixed costs, establish quantity-driven pricing matrices or establish time-limited "sale" pricing. The heart of UA's innovative Total e-Biz and Production and Manufacturing applications.

PO - Purchasing

- Purchase Agreement
- Purchase Order
- Drop Ship
- Internal Requisition

These are but a few of the features that have been tailored to large equipment dealers –

Call to schedule a web demonstration for your process management team today.