

Small Business Manager Equipment Repair-- Job Shop Features

Work Order Entry

To select a customer, F2 or click here.....

Work Orders
Exit Post
Current Mode: Add

ADVANTAGE MACHINE & SUPPLY
2043 PONDEROSA STREET
PORTSMOUTH, VA 23701
() 408-5085

Equipment

Batch #: 12308
Ref #: 0
Date: 4/26/2011
WO Type:
Contact: 40659
TechID:

SU#:
SN#:

Qty	Item	Part #	Description	Selling Price	Extended
1.00					\$0.00

Customer Equipment

SU #:	Type:	SN/ Vin#:	Make:	Model:	Material #
CPE:5	Flex	hjkaskjh	lasjdlakj	jlaskjl	
CPE:6	Ridgid	ahsdkjh			
CPE:7	Ridgid	93246492748			

N.B. If a serialized unit has already been assigned to this work order the inspections and images will be cleared and reset.

New Select

When taking a repair work order you can choose from and add to the customer's equipment list. Thereby maintaining the repair history of the specific equipment by serial number.

Any and all parts and services to be provided can be added to the work order, along with notes specific notes for the technician.

Work Order Entry

To select a customer, F2 or click here.....

Work Orders
Exit Post
Current Mode: Add

ADVANTAGE MACHINE & SUPPLY
2043 PONDEROSA STREET
PORTSMOUTH, VA 23701
() 408-5085

Equipment

Batch #: 12308
Ref #: 0
Date: 4/26/2011
WO Type:
Contact: 40659
TechID:

SU#: CPE:5
SN#: hjkaskjh

Step	Inspection	Value	Required
1	stepp 1		<input checked="" type="checkbox"/>
2	setp 2		<input type="checkbox"/>
3	step 3		<input checked="" type="checkbox"/>

Spell Check

Attaching a specific equipment unit enables the defined inspection and results data collection form/tab.

Technicians working the order can inspect and record the observed values -- before and after repair.

Additionally an image tab is provided to attach before and after images.

System Manager Lite

Customer Name	WorkOrder#	Date	SU#	Serial Number	Est#	Field	Status	Type	Created
ADVEK CORPORATION	2807	11/21/2010			25395		Order Accepted	Flex	
ADVEK CORPORATION	2808	11/21/2010							
ADVEK CORPORATION	2809	11/21/2010							
ADVEK CORPORATION	2810	11/21/2010							
ADVEK CORPORATION	2811	11/21/2010							
ADPONDACK ELECTRONICS	2814	11/21/2010							

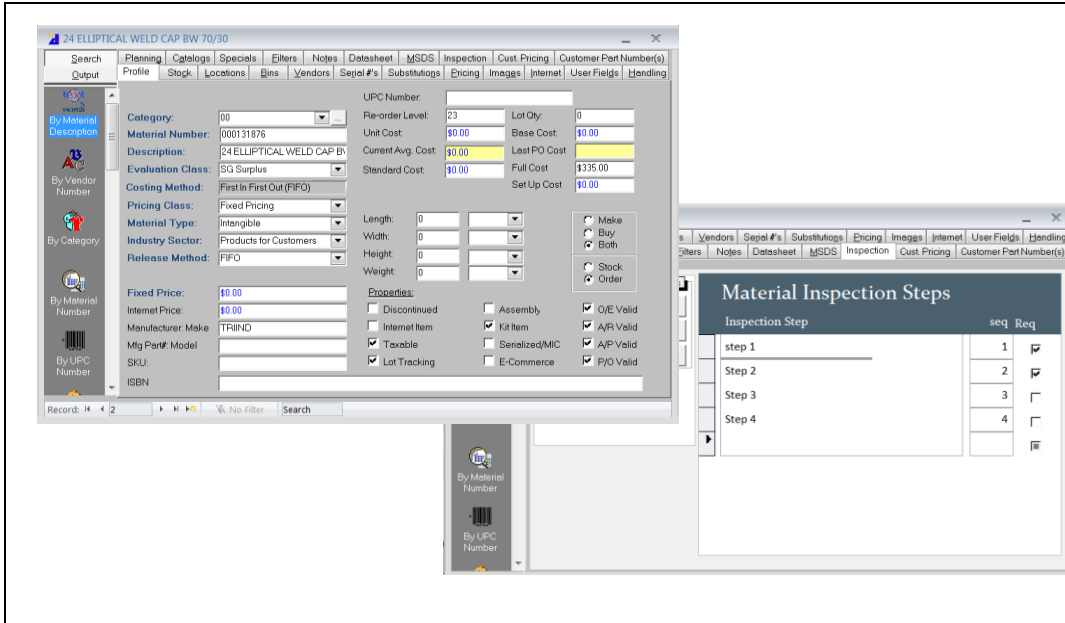
WORK ORDER BOX

WORK ORDER ESTIMATE

The work order manager allows the manager to view, schedule and assign all work orders, print the schedules, estimates and routing tickets to be used during repair.

Optional bar coding can be used to track the movement and time utilized in each step of the repair process.

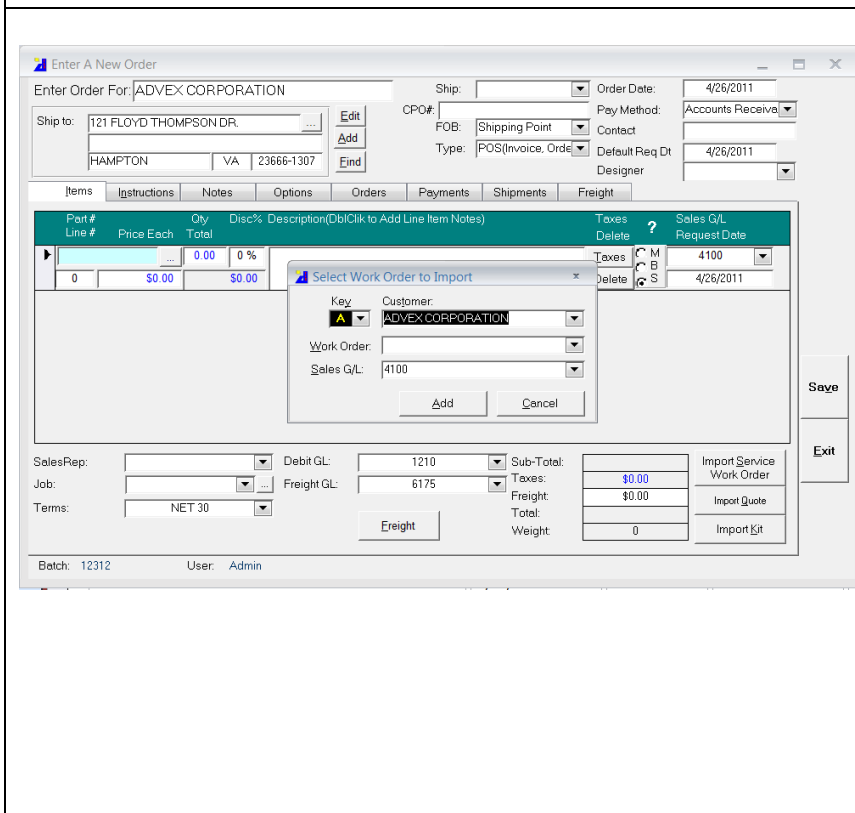
Setting the work order status to closed, enables the work order to be imported into a sales order.



The System include and integrated robust multisite, multi bin inventory that handles bulk, batch, serialized and intangible goods and services.

With pricing options of market, fixed, cogs +, quantity matrix and customer specific.

And much more..



Importing the work order into the sales order process enables setting of prices, discounts, terms and the immediate processing of the order as either a POS (Paid on the spot), Invoice (placed on account), Standard or Hold.

Additional features allow for special notes, sales of new goods or parts, look up on prior orders/items, payments, shipments, taking down payments and tracking of orders by JOB for Job Costing.

And of course the entire operation is fully integrated with amid range accounting system.