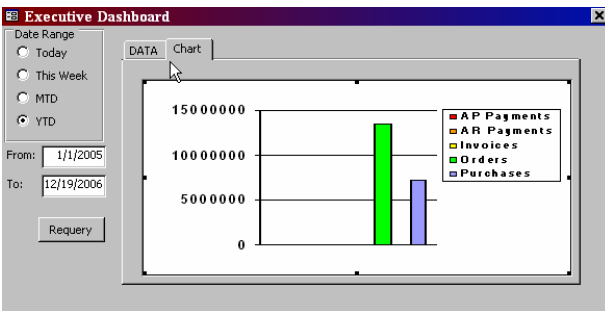
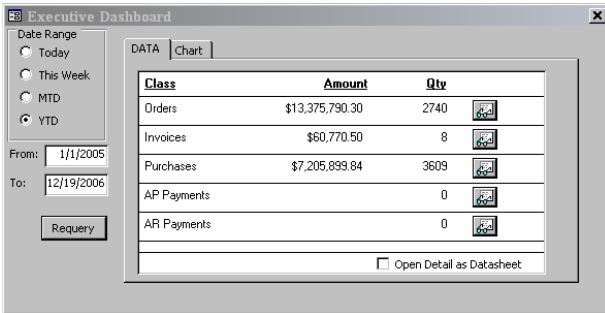




*Executive dashboard adds dynamic monitoring of key business indicators.*



**Dashboard summary**

- ➔ Small pop up display – allows it to stay open on the side of the desktop
- ➔ Dynamically updates at preset intervals 5 min to daily
- ➔ Display shows
  - \$\$ and QTY
  - For selected or entered date range
  - Refresh on demand and/or automatic
  - Can be left on figures or Chart view both are dynamic
- ➔ Key metrics available
  - Orders -
  - Quotes
  - Invoices (AR)
  - Vouchers (AP)
  - Purchase Orders
  - Shipments
  - Work Orders
- ➔ Drill down to details

Order#	CustomerName	Date	Batch#	Amount	PO#
70045	127 AIR NATIONAL GUARD MN	7/30/2005	0	\$264.00	34242
70044	127 AIR NATIONAL GUARD MN	7/30/2005	0	\$1,319.00	ASDASDADS
70043	127 AIR NATIONAL GUARD MN	7/30/2005	0	\$95.00	123
70042	127 AIR NATIONAL GUARD MN	7/30/2005	0	\$95.00	123
70041	127 AIR NATIONAL GUARD MN	7/30/2005	0	\$95.00	SDFSDFF
70040	ABACUS TECHNOLOGY CORP	7/30/2005	0	\$0.00	sASsAS
70039	842ND TRANSPORTATION BA	7/30/2005	0	\$0.00	assadasd
70038	842ND TRANSPORTATION BA	7/30/2005	0	\$95.00	assadasd
70037	127 AIR NATIONAL GUARD MN	7/30/2005	0	\$0.00	123
70036	216TH ENGINEERING - ANG	6/7/2005	4824	\$5,424.00	0
70035	842ND TRANSPORTATION BA	6/7/2005			
70034	NORTHROP GRUMMAN FAIRF.	6/7/2005			
70033	205MIBN	6/7/2005			
70032	205MIBN	6/7/2005			
70031	EDWARDS AIR FORCE BASE	6/7/2005			
70030	NORTHROP GRUMMAN FAIRF.	6/7/2005			
70029	CONTROLLED ENERGY CORP	6/7/2005			

MaterialNum	Description	Qty	UnitPrice	Discoun	Shippec
CISCO 3745:2440	CISCO 3745 SER IOS IP PLUS F	1	\$608.00	0	0
CISCO 3600:2439	CISCO 3600 VOICE INTERFACE	1	\$1,221.00	0	0
CISCO 3700:2304	CISCO 3700 SERIES 4- SLOT A	1	\$8,122.00	0	0

**Dash Board Details**

- ➔ In this example orders in date range are displayed
- ➔ Drill down to specifics of what was ordered
- ➔ Details are sort-able by each column and can include alternate fields such as salesman, due date etc.