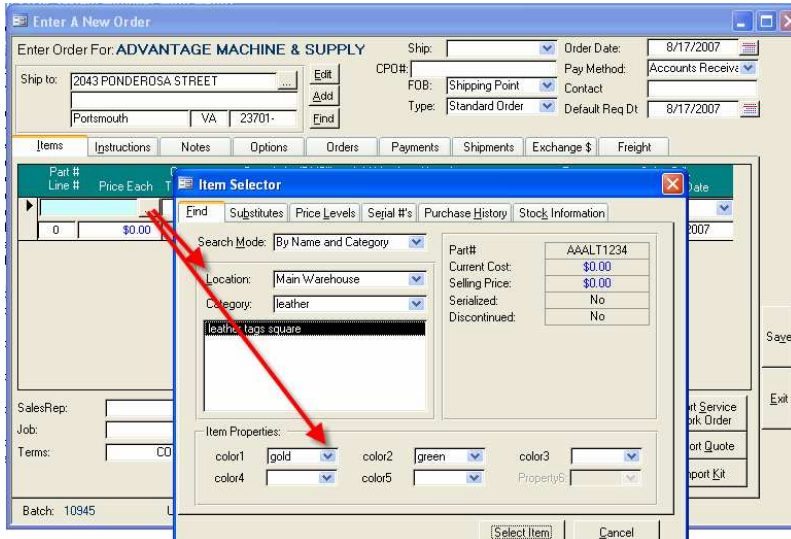
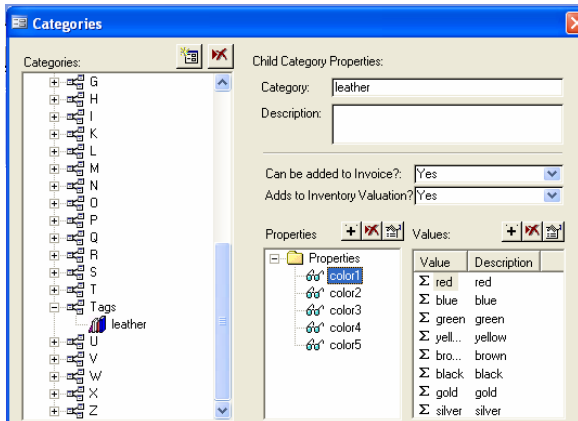


*Small Business Manager Promotional Goods Job Shop Features*

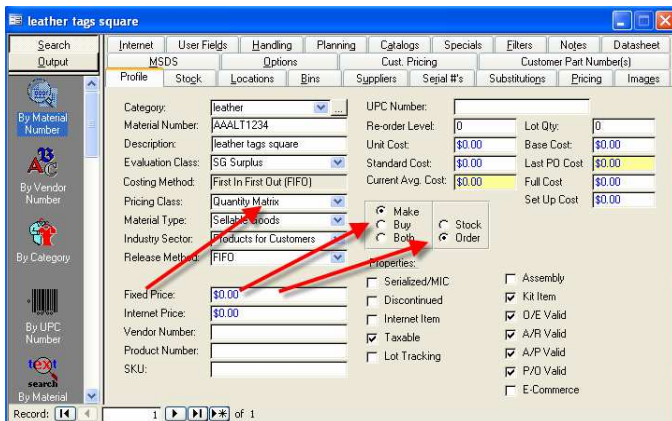


When taking order the item selector allow identification of colors and looks up price based on number of colors from defined price matrix.

User can also look up price matrix and check on stock level of “blanks” from this selector.



Define categories and properties (colors). Number of colors and colors available. All similar materials can belong to this category



Define materials in this category as make items

Assign/ insert image to used on work order.

leather tags square

Search Output

Internet User Fields Handling Planning Catalogs Specials Filters Notes Datasheet

MSDS Options Cust. Pricing Customer Part Number(s)

Profile Stock Locations Bins Suppliers Serial #'s Substitutions Pricing Images

Under a Pricing Matrix strategy, material prices are quantity driven from defined matrix

Description:	Qty Low:	Qty High:	1	2	3	4	5
small	1.00	1,000.00	\$10.00	\$12.00	\$14.00	\$16.00	\$18.00
med	1,001.00	5,000.00	\$8.00	\$9.00	\$10.00	\$11.00	\$12.00
large	5,001.00	99,999.00	\$7.00	\$8.00	\$9.00	\$10.00	\$11.00
	0.00	0.00	\$0.00	\$0.00	\$0.00	\$0.00	\$0.00

By Material Number

By Vendor Number

By Category

By UPC Number

By Material

Define price matrix for this material based on colors

Production Work Orders - under development... Not Yet Released to Production

Batch #: 3690  
Job #: 24998  
Date: 10/17/2002  
Dye Date: 11/21/2002  
WorkOrder#: 686  
Priority: 2

Quantity: 5  
Material Number: 11157098  
Description: 1/2 x 1/4 INSERT 3M SW 90/10

Production Control Sheet

Qty	Item	Part #	Description	Base Cost	Extended	MIC	MIC Number
1.00		R9109400	1.094 ROD 90/10 C70600 MIL-C-15726	\$5.50	\$2.31	W	

Production Schedule

WO#	Material Number	Description	DueDate	ScheduleDate	Work Order Status	Priority	Close Date	Put In stock	LastQ
2886	11101100	1/2 SR30 3M SW 90/10	5/19/2003		Order Acceptanc	W			2/2
2894	17446250	1/4 UNION THRDPIECE BLANK 40	2/7/2003		Order Acceptanc	W			2/2
2893	17958150	3/4 IPS 4008 BLANK UNION TLPCSI	2/7/2003		Order Acceptanc	W			4/2
2892	18151449	5 x 4 1/2 CONC PDCR 70/30 BE	4/23/2003		Order Acceptanc	W			2/2
2891	18105750	5 ST 45 90/10 CL200 BELL END	4/14/2003		Order Acceptanc	W			2/2
2890	17008900	10 SLEEVE CL200 70/30	2/28/2003		Order Acceptanc	W			2/2
2889	17008700	6 SLEEVE CL200 70/30	2/28/2003		Order Acceptanc	W			2/2
2887	17008650	5 SLEEVE CL200 70/30	2/28/2003		Order Acceptanc	W			2/2
2886	17008600	4 SLEEVE CL200 70/30	2/28/2003		Order Acceptanc	W			2/2
2884	17121401	2 x 3/2 TEE 4008 W/ 70/30	3/3/2003		Order Acceptanc	W			2/2
2883	17121286	1/2 x 1/4 x 1/2 TEE 4008 SW 70	3/3/2003		Order Acceptanc	W			2/2
2882	18101750	8 SR90 70/30 CL200 BELL END	4/4/2003		Order Acceptanc	W			2/2
2881	18000750	8 COUPLING 90/10 CL200 BELL EN	3/7/2003		Order Acceptanc	W			2/2
2880	18000750	8 COUPLING CL200 BELL END 70/3	3/7/2003		Order Acceptanc	W			2/2
2879	18121747	8 x 8 x 4 TEE CL300 BELL END 70/3	4/4/2003		Order Acceptanc	W			2/2
2877	18109400	1/4 IPS RLOI 8035 70/30 4008 3/4	2/28/2003		Order Acceptanc	W			2/2
2874	18150449	2 1/2 x 2 CONC PDCR 70/30 CL200	1/31/2003		Order Acceptanc	W			2/2
2868	18301450F	2 1/2 UNION BRZ SB W/ADPR RING	4/7/2003		Order Acceptanc	W			2/2

Sales order creates un-posted work order awaiting art work and final production notes

Posted work order appears on production schedule. Closing work order puts finished goods into inventory and removes raw materials/ goods used in production

\*\*\*\*\*From an Unposted Work Order\*\*\*\*\* 8/17/2007 8:03:33 AM

Material# 11157098 Desc: 1/2 x 1/4 INSERT 3M SW90/10  
Qty: 5 RequestDate: 11/21/2002  
PO#: X5-07048-012 Work Order #: 686 Sales Order#: 24998  
Cust#: INGSHI Customer: NORTHRUP GRUMMAN-INGA

Level	MaterialNumber	Quantity	Description	MIC
Raw Materials	R9109400	2.0999999	1.094 ROD 90/10 C70600 MIL-C-15726	

SW m Forging,Rod,Tube or Plate (NoHydro or F&B)

Steps

Steps	DATE COMPLETE	SIGNATURE
1 Pull material per WO. Review drawing and WO. Enter "Pulled Material" in ProdSked.		
2 Cut pipe / bar to length. Deburr as necessary.		
3 Machine. Clean, Deburr and inspect		

Print out work order / routing ticket to accompany work.

Work orders will detail colors to be applied, artwork, and material to use. Optionally can display image of what finished goods should look like.