



Designed to identify production requirements, provide shop floor routing documents, production instructions/signoffs, control and scheduling for manufacturing/ job shop environments.

### BOM/Production Control Sheets

- Create/edit multi-level Bill Of Materials (BOM)
- Create Production Instructions from user defined “workstop” tasks.
- Assign Generic or Product Specific Production Instruction to fabricated (“Make”) materials

### Work Schedule

- At a glance, determine where each material is in the production process
- Sort WorkSked by Customer, Part Number, or by Type
- Prints WorkSked report according to the sort order
- Missing materials from exploded BOM show up as color-coded new requirements
- Change and update inventory status and priority
- Drill down to source documents

RequestDate	Material	Qty	BO	MadeQty	Pa/Value	Comments	Author	DateEntered
6/8/2002	000133620	999	999	0	0	SRC	PO	W/O
6/9/2002	12301300	1.2E+09	999	0	0	SRC	PO	W/O

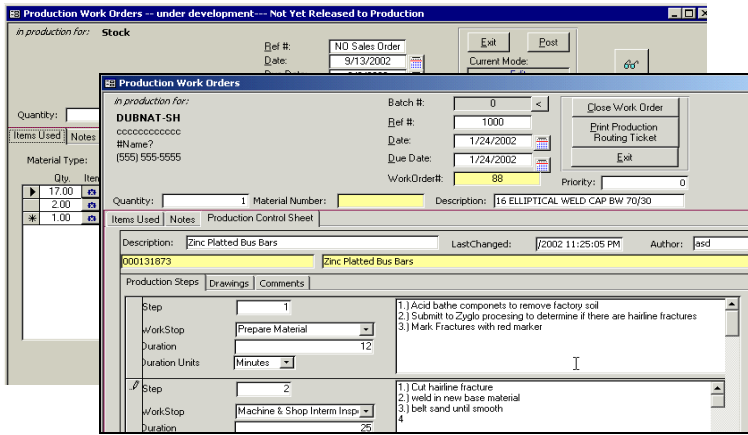
RequestDate	Material Number	MaterialDescription	Req Qty	Lot Qty	Pa/Value	Status
3/16/2003	ASFL2-023	1/2 O-RING MIL-R-83248 TY-1 CL-2 B	1			SR
3/16/2003	BCUP6100	1/2 IPS RETAINER RING	1934			SR
	AS568-023	1/2 O-RING FLUORCARBON 700	1934			SR
	BCUP6100	1/2 IPS RETAINER RING	1134			SR
	AS568-023	1/2 O-RING FLUORCARBON 700	1134			SR
	ASFL2-023	1/2 O-RING MIL-R-83248 TY-1 CL-2 B	8			SR
11/22/2002	B939N060	(3-1/2 x 36) x 3/8 OUTLET 90/10 400	8	0	0	SR
3/3/2003	SB106400	2 SR ST-90 90/10 CL200 BELL END	1	0	0	SR
3/16/2003	BA111448	2-1/2X 1-1/2 LR90 SCH10 BW 304L	4	0	0	SR
3/16/2003	BA111598	4X 3 LR90 SCH10 BW 304L	4	0	0	SR
2/3/2003	BA111749	8X 6 LR90 SCH10 BW 304L	2	0	0	SR

### Production

- Display categorized “Make” material requirements task list
- Routes requirements to Purchase Order Requirements and creates Production Work Orders.
- Double click on part number to display “Net” Inventory Status: listing all stock on hand, stock not Available to Promise (Non-ATP), items reserved, and those on Purchase Order but not yet received
- Click on “SRC” to drill down to requirement source document: either Sales Order or other Work Order
- Make to Order or assign to Stock Work Order

### Purchase

- Accumulated Materials to be purchased work list
- Color Coded: Red = Overdue; Yellow = Warning (within 10 days.); White = needed > 10 days; Blue= Selected

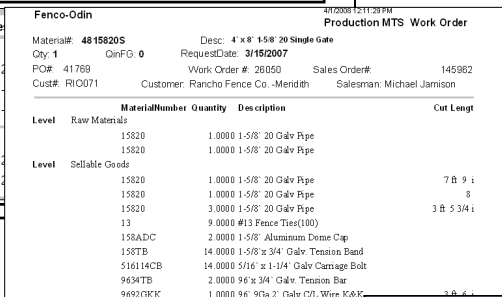
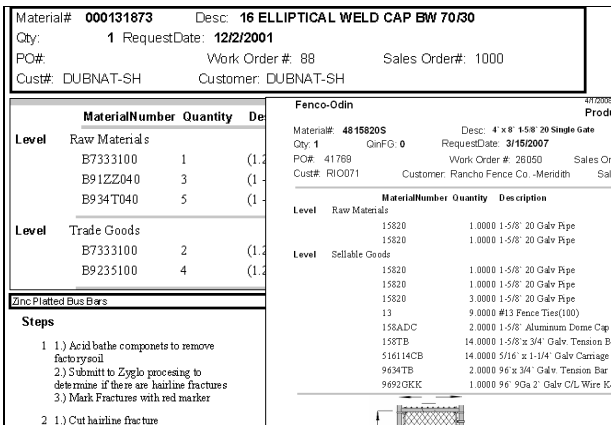


## Work Orders

- Editable Work Order(s) enables special instructions, additional or substitute parts, and modified processes.
- Make quantity driven by sales order and material profile lot quantity.
- Quantity reduction optionally re-routes balance as new production requirement for subsequent build or PO re-route.
- Prints Work Order shop floor routing ticket

## Production Schedule

- Triggers the movement of goods through inventory
- Contains the Posted Work Orders
- Tracks/posts the status of goods in production
- The Pulled status marks BOM inventory items RFP (Reserved For Production)
- Closing work order automatically updates reserved goods, augments inventory ATP (Available To Promise), and removes reserved goods previously pulled (Back Flush)



W/O #	Material Number	Description	Due Date	Schedule Date	Work Order Status	Priority	Close Date	Pulled Date	Put In Stock	Last Changed	W/O Date
130	000133620	(2-1/2-36) x 1-1/2 O-LET 3000# SW 3	6/8/2002	6/8/2002	Partial Pulled	4		6/18/2002		6/18/2002	6/11/2002
131	000133630	(2-1/2-36) x 1-1/2 O-LET 3000# SW 3	6/8/2002	6/8/2002	Order Acceptance	4				6/11/2002	6/11/2002
132	000133620	(2-1/2-36) x 1-1/2 O-LET 3000# SW 3	6/8/2002	6/8/2002	Order Acceptance	4				6/11/2002	6/11/2002
133	000133620	(2-1/2-36) x 1-1/2 O-LET 3000# SW 3	6/8/2002	6/8/2002	Order Acceptance	4				6/11/2002	6/11/2002
134	000133620	(2-1/2-36) x 1-1/2 O-LET 3000# SW 3	6/8/2002	6/8/2002	Order Acceptance	4				6/11/2002	6/11/2002
137	000133620	(2-1/2-36) x 1-1/2 O-LET 3000# SW 3	6/8/2002	6/14/2002	Order Acceptance	4				6/11/2002	6/21/2002
138	000133620	(2-1/2-36) x 1-1/2 O-LET 3000# SW 3	6/8/2002	6/8/2002	Order Acceptance	4				6/11/2002	6/11/2002
135	11101108	1/2 SR90 3M SW 90/10	6/8/2002	6/8/2002	Order Acceptance	4				6/11/2002	6/11/2002
136	000133620	(2-1/2-36) x 1-1/2 O-LET 3000# SW 3	6/8/2002	6/8/2002	Order Acceptance	4				6/11/2002	6/11/2002

## Production Schedule

## Additional Reports:

- BOM (Bill of Materials) Report
- Missing BOM
- Production Routing Document – (Shop Floor Routing) Missing PCS (Production Control Sheet –

Material Number	In Production	Non - ATP	On Hand - ATP	Committed	On PO	Net
000133621	0	0	0	373	444	71
000133621						
000133630						
000133697						
000133778						
1001554M						
11101040						
11101060						
11101098						
11101100						
11101149						

## Inventory Status

- Net On Hand:
  - Displays inventory status by date
  - Details the materials that make up each item
  - Lists items in inventory, those on order, those that are reserved those in production, on Purchase Order, Exploded BOM Requirements one level up
  - Drill down to source document

## Inventory Status

- Inventory status shows aggregation of inventory for the selected material

Category	Material Number	Material Description	Quantity
PN	11101150	3/4 SR90 3M SW 90/10	1
PN	F1101150	3/4 SR90 3M SW 90/10 FORGING	1

Data	Number	Order date	Due Date	QTY	Net
11101150	On Hand	OH	3/13/2003	3/13/2003	18.00
					0.00

## Net On Hand

For more information contact Advantec at 336-275-2832, email us at [Advantec@advantecis.com](mailto:Advantec@advantecis.com) or visit our website [www.advantecis.com](http://www.advantecis.com)