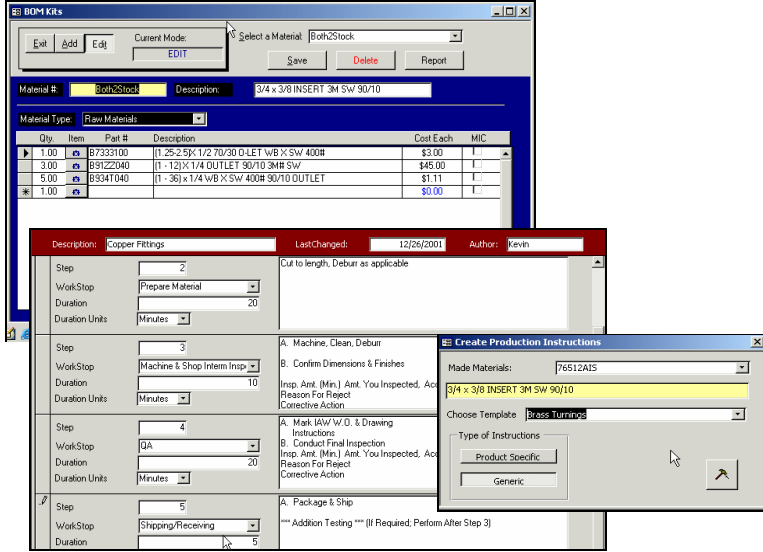




Designed to identify production requirements, provide shop floor routing documents, production instructions/signoffs, control and scheduling for light manufacturing/ job shop environments.



BOM/Production Control Sheets

- Create/edit multi-level Bill Of Materials (BOM)
- Create Production Instructions from user defined "workstop" tasks.
- Assign Generic or Product Specific Production Instruction to fabricated ("Make") materials

Work Schedule

- At a glance, determine where each material is in the production process
- Sort WorkSked by Customer, Part Number, or by Type
- Prints WorkSked report according to the sort order
- Missing materials from exploded BOM show up as color-coded new requirements
- Change and update inventory status and priority
- Drill down to source documents

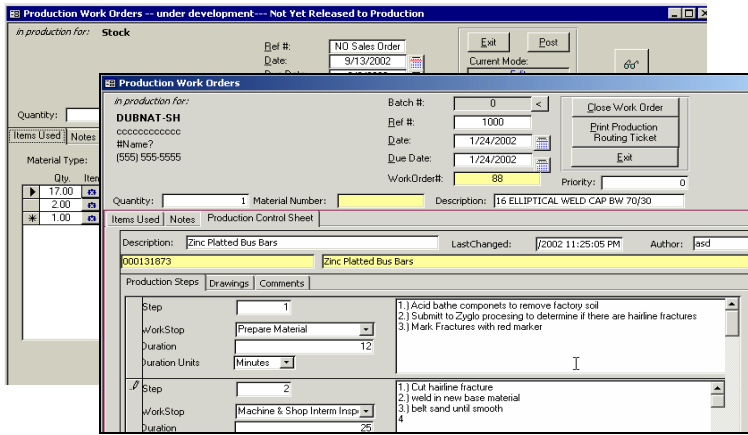
RequestDate	Material Number	MaterialDescription	Req Qty	Lot Qty	Pa/Value			
3/16/2003	ASFL2-023	1/2 O-RING MIL-R-83248 TY-1 CL-2 B	1			SR	Selec	WO P
3/16/2003	BCUP6100	1/2 IPS RETAINER RING	1934			SR	Selec	WO P
	AS568-023	1/2 O-RING FLUORCARBON 70D	1934			SR	Selec	WO P
	BCUP6100	1/2 IPS RETAINER RING	1134			SR	Selec	WO P
	AS568-023	1/2 O-RING FLUORCARBON 70D	1134			SR	Selec	WO P
	ASFL2-023	1/2 O-RING MIL-R-83248 TY-1 CL-2 B	8			SR	Selec	WO P
11/22/2002	B939N050	(3-1/2 x 3/8) x 3/8 OUTLET 90/10 400	8	0	0	SR	Selec	WO P
3/3/2003	SB106400	2 SR ST-90 90/10 CL200 BELL END	1	0	0	SR	Selec	WO P
3/16/2003	BA111448	2-1/2 X 1-1/2 LR90 SCH10 BW 304L	4	0	0	SR	Selec	WO P
3/16/2003	BA111598	4 X 3 LR90 SCH10 BW 304L	4	0	0	SR	Selec	WO P
2/3/2003	BA111749	8 X 6 LR90 SCH10 BW 304L	2	0	0	SR	Selec	WO P

Production

- Display categorized "Make" material requirements task list
- Routes requirements to Purchase Order Requirements and creates Production Work Orders.
- Double click on part number to display "Net" Inventory Status: listing all stock on hand, stock not Available to Promise (Non-ATP), items reserved, and those on Purchase Order but not yet received
- Click on "SRC" to drill down to requirement source document: either Sales Order or other Work Order
- Make to Order or assign to Stock Work Order

Purchase

- Accumulated Materials to be purchased work list
- Color Coded: Red = Overdue; Yellow = Warning (within 10 days.); White = needed > 10 days; Blue= Selected



Work Orders

- Editable Work Order(s) enables special instructions, additional or substitute parts, and modified processes.
- Make quantity driven by sales order and material profile lot quantity.
- Quantity reduction optionally re-routes balance as new production requirement for subsequent build or PO re-route.
- Prints Work Order shop floor routing ticket

Production Schedule

- Triggers the movement of goods through inventory
- Contains the Posted Work Orders
- Tracks/posts the status of goods in production
- The Pulled status marks BOM inventory items RFP (Reserved For Production)
- Closing work order automatically updates reserved goods, augments inventory ATP (Available To Promise), and removes reserved goods previously pulled (Back Flush)

Material#	000131873	Desc:	16 ELLIPTICAL WELD CAP BW 70/30
City:	1	RequestDate:	12/2/2001
PO#:		Work Order #:	88
Cust#:	DUBNAT-SH	Customer:	DUBNAT-SH

Level	MaterialNumber	Quantity	Description	MIC
Raw Materials	B7333100	1	(1.25-2.5)X 1/2 70/30 O-LET WB X SW 400	0
	B91ZZ040	3	(1 - 12) X 1/4 OUTLET 90/10 3M# SW	0
	B934T040	5	(1 - 36) x 1/4 WB X SW 400# 90/10 OUTLE	0
Trade Goods	B7333100	2	(1.25-2.5)X 1/2 70/30 O-LET WB X SW 400	0
	B9235100	4	(1.25 x 3.5) x 1/2 O-LET 90/10 3M WBxFT	0

Steps	DATE COMPLETE	SIGNATURE
1. 1.) Acid bathe components to remove factory soil 2.) Submit to Zygo processing to determine if there are hairline fractures 3.) Mark Fractures with red marker		
2. 1.) Cut hairline fracture		

Production Schedule Inventory Status

- Inventory status shows aggregation of inventory for the selected material

Additional Reports:

- BOM (Bill of Materials) Report
- Missing BOM
- Production Routing Document – (Shop Floor Routing) Missing PCS (Production Control Sheet –

MaterialNumber	In Production	Non - ATP	On Hand - ATP	Committed:	On PO:	Net:
000133621	0	0	0	373	444	71

Inventory Status

- Net On Hand:
 - Displays inventory status by date
 - Details the materials that make up each item
 - Lists items in inventory, those on order, those that are reserved those in production, on Purchase Order, Exploded BOM Requirements one level up
 - Drill down to source document

Date	Number	Order date	Due Date	QTY	Net
11/10/1150	On Hand	OH	3/13/2003	3/13/2003	18.00
					0.00

Net On Hand

For more information contact Advantec at 336-275-2832, email us at Advantec@advantecis.com or visit our website www.advantecis.com