



Supports wholesale distribution and Import Business Models

Enhancements to UA Order Entry, Materials (pricing and costing) and Purchase Orders along with new Features: Shipping Manager, Container Manager, Allocation and Credit Authorization make a robust industry focused application suite to support import operations for containerized goods and domestic distribution.

- Modifications to Order Entry and Purchase Orders**
- ➔ Orders automatically go to Credit Approval
 - ➔ Automatically Make Direct Container Purchase Orders from Order Entry
 - ➔ Orders price based on destination and price group (optionally)
 - ➔ Direct Container Purchase Orders cost based on destination cost group (optionally)
 - ➔ (order screen depicted custom layout for furniture)

Edit Order / Credit authorization

Order#	Customer	Cust PO#	Credit Status	Billed	Cleared	ShCmpl	Allocated	Order Status	Total	Date
11423	A Touch of Country		Approved					Allocated	\$327.50	2/25/2005
11427	A Touch of Country		Approved					Submitted	\$327.50	2/25/2005
11426	A.A. Aaron's								\$0.00	2/24/2005
11425	Barrow's Fine Furnitur							Submitted	\$23.00	2/22/2005
11424	54 Home Decor		Approved					Allocated	\$23.00	2/22/2005
11423	54 Home Decor		Approved					Allocated	\$655.00	2/21/2005
11422	54 Home Decor		Approved					Allocated	\$1,565.00	2/21/2005
11421	6 Day Discount Furnit		Approved						\$0.00	2/21/2005
11420	Abbot Furniture		Pending Approval						\$12.00	2/19/2005
11419	Abbot Furniture		Pending Approval						\$12.00	2/19/2005
11418	A.A. Aaron's		Pending Approval					Submitted	\$1,357.00	2/19/2005
11417	Aaron's Fine Furniture		Pending Approval					On Hold	\$78.00	2/19/2005
11416	Aaron's Fine Furniture		Approved					Entered	\$200.00	2/19/2005
11415	40th & Plum Oak Furr		Withdrawn/Declined						\$300.00	2/17/2005
11414	Abbot Furniture		Pending Approval					Submitted	\$24.00	2/15/2005
11413	51039 Quarantala(PT)		Pending Approval						\$200.00	2/15/2005
11412	40th & Plum Oak Furr		Pending Approval					Allocated	\$200.00	2/15/2005
11411	132 Main Street		Pending Approval						\$365.00	2/14/2005

- ➔ Credit Hold / edit order selector displays, reports and maintains status
- ➔ Optional FTP interface for Factor approval / advice
- ➔ Controls order release to allocation

Allocations

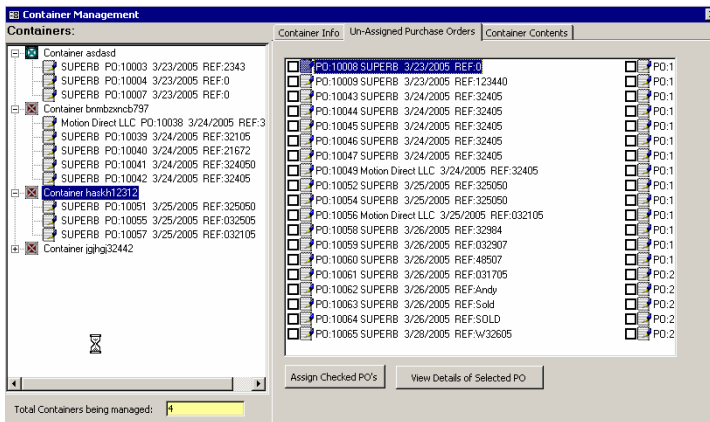
- ➔ View sort, filter sales order line items and associated allocation.
- ➔ Four level allocation from available quantity in materials management repositories PI, OTW, WHSE and Purchase Order requirements List
- ➔ De-allocate and Re-Allocate with visual filtering by product and company to enable sales / customer management

Microsoft Access - [Line Items From Allocated Orders]

Customer	CPDH:	SRC DOC #	MaterialNumber	Description	Qty	BO	Req Date	SRC	Ship Date	Allocation
54 Home Decor	0	11422	9484-011732	Jensen 1732 Desert Bord	30		2/21/2005	SO		
54 Home Decor	0	11423	9484-011732	Jensen 1732 Desert Bord	10		2/21/2005	SO		
54 Home Decor	0	11424	4800-01R4	Manhattan Choco Brown	1		2/22/2005	SO		
A Touch of Coun	0						2/25/2005	SO		
A Touch of Coun	0						2/25/2005	SO		

Materials Reserved This Item

BinHistoryID	Bin	Quantity	Date
157188	WHSE	10	2/21/2005
157191	OTW	8	2/21/2005

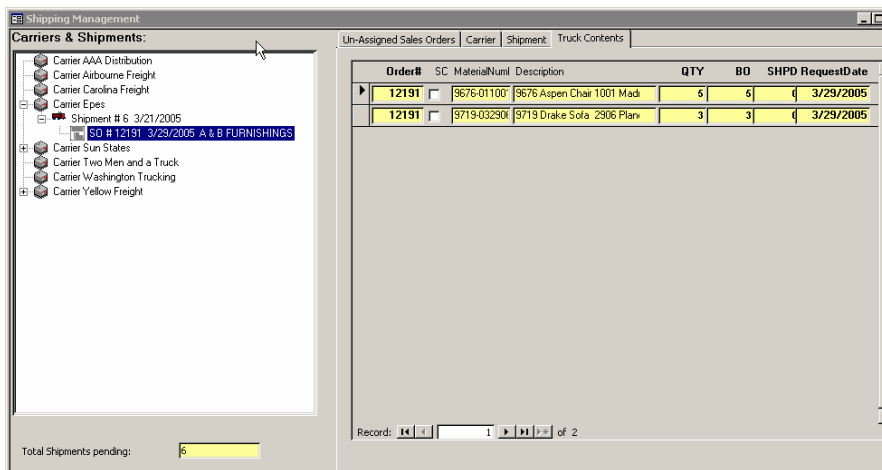
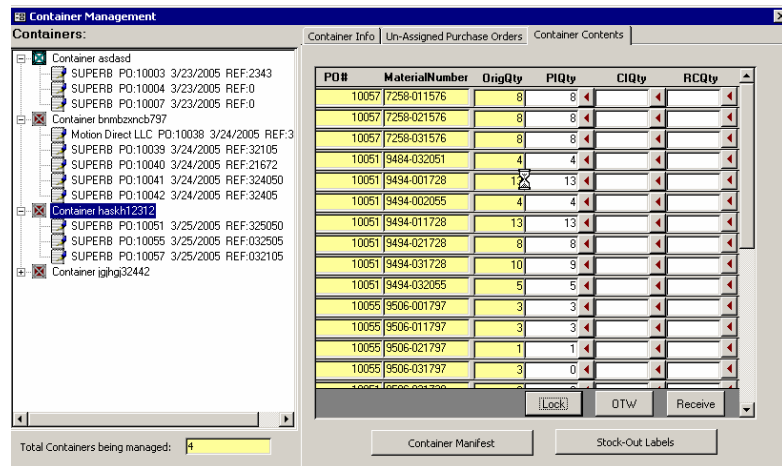


Container Manager (Receiving)

- Build and manage containers
- Assign and move Purchase Orders to or between containers
- Prepare Container Manifest for unloading verification
- Calculate container weight, cubes and seats
- Prepare goods destination tags for allocated materials contained therein
- Supports Short Ships & Cancellations

Easy Bulk Receiving by line item

- Commit PI with automatic Purchase Order change application
- Receive On The Water and confirm ETD/ETA
- Receive goods into the Warehouse(s) on arrival
- All receipts are available for allocation
- Receive customer rejected direct containers into inventory
- Receive (Flow) direct containers through inventory and into customer bill-ables.



Shipment Manager (Shipping)

- Maintain Carrier Records
- Create Shipments by carrier truck, and date
- Assign full and partial allocated orders to shipments
- Calculate Shipment weight, cubes and seats
- Print Shipment Bills of Lading (BOL)
- Print Shipping Manifest
- Print Item Shipping Labels
- Plan Trucks
- Handles Short ships
- Relieves Inventory

Additional Features:

- Purchase Requirements List manager : generates and assign unallocated goods to new purchase orders
- AIS-Net – Net inventory Timeline tool for analyzing demand and supply over time

Dynamic Batches – to provide multiple levels/costs of goods by material/ dates/ expiration/lots/etc.

System Specs:

- Requires UA Corporate Accounting 7.0 or later
- MS Windows Desktops
- MS Windows Server
- MS SQL Server or MSDE runtime versions available
- Always Sold with Source Code