



Integrated bar code memory scanner functions for UA Corporate Accounting

The 'Create Picklist' window features a 'Select Filter Type' section with radio buttons for Order#, RequestDate, Cust#, and Material#. A search field with a '#' label and 'Filter'/'Clear' buttons is present. Below is a table with columns: Cust#, Order#, Material Number, Qty, Request Date, and a checkbox. The table contains several rows of data. At the bottom are 'Uncheck All' and 'Create Picklist' buttons.

Cust#	Order#	Material Number	Qty	Request Date	
B1006	4000	465-660	9	12/29/2003	<input type="checkbox"/>
D1009	4001	465-260	2	1/5/2004	<input type="checkbox"/>
D1009	4001	465-271	2	1/5/2004	<input type="checkbox"/>
D1009	4001	465-270	2	1/5/2004	<input type="checkbox"/>
D1009	4001	465-962	2	1/5/2004	<input type="checkbox"/>
D1009	4001	465-268	2	1/5/2004	<input type="checkbox"/>

Scanner Pick List

- Create Pick List for Scanner from unshipped order line items
 - Filter all Open Orders by
 - Order#
 - Customer #
 - Request Date
 - Material Number
 - Select desired Line Items
- Add to Pick List Scanner File.

Scanner Receive Manifest

- Create Receive Manifest List from outstanding PO line items
 - Filter by:
 - PO#
 - Due Date
 - Shipping Container
- Print Bar Code labels for any selected PO items.

The 'Create Manifest' window has a 'Select Filter Type' section with radio buttons for By PO#, By Due Date, and By Container. It includes a search field with a '#' label and 'Filter'/'Clear' buttons. Below are 'By Container' and 'By PO' buttons. A table with columns: PO#, Quantity, Material Number, Due Date, Container#, and a checkbox is shown. At the bottom are 'Uncheck All' and 'Create Manifest' buttons.

PO#	Quantity	Material Number	Due Date	Container#	
10148	1	2100		15649156	<input type="checkbox"/>
10151	2	845-201		1561561	<input type="checkbox"/>

The 'View Picklist' window shows a table with columns: PO#, Material Number, and Quantity. The 'View Manifest' window displays a 'Manifest Report' with details for three POs, including material numbers, quantities, serials, and barcodes.

Manifest Report

PO Number: 10152

Material Number: 353-302
 Quantity: 2
 Serial: NO

Material Number: RB-6000
 Quantity: 3
 Serial: NO

PO Number: 10153

Material Number: 877-952
 Quantity: 3
 Serial: NO

PO Number: 10154

Prepare Barcode Work Documents

- Lists can be compiled and edited in multiple sessions
- Review/edit Ship List
- Review/edit Manifest List
- Print Hard Copy of Ship List/Manifest List



Upload & Reconcile

Import Shipped Pick Records	View Shipped	Reconcile Shipping Records
Import Received ROG Records	View Received	Reconcile Received Records
Import Scanned Inventory	View Inventory	Reconcile Inventory
Import Scanned Transfer Goods	View Transfer	Process Transfer

Utilizes Symbol Technology Bar Code Scanners

- “ Scanner Software Included
 - Load & Unload Gun(s)
- “ Scanner Applications
 - Pull Pick Ticket
 - Receive against Manifest
 - Collect Inventory
 - Transfer Inventory

Reconcile Scanned Data

- “ Automatically Update inventory for shipments and fulfill sales orders
- “ Automatically receive goods into inventory and fulfill Purchase Orders
- “ Optionally Transfer goods from In-Transit to Received – for import users
- “ Update and run inventory reconciliation for a single category/location or entire inventory.
- “ Maintains Inventory reconciliation log (cycle count history/results)
- “ Produces long/short Inventory Reconciliation Report
- “ Allows re-entry of rescanned data to correct scanning errors
- “ Integrates with Industrial Version to automate the updates via inventory reconciliation.

Inventory Reconciliation

Choose
 Start New Batch Enter Batch Description: Category 995
 Join Existing Batch and select categories from list below:

Parent Category	Description	Child Category	CategoryID	Check
795 Hyde Park	795 Hyde Park Bedroom	795 Bed	69	<input type="checkbox"/>
875 Carriage Hc	875 Carriage House Bedroom	875 Bed	70	<input type="checkbox"/>
888 Florentine	888 Florentine Bedroom	888 Bed	72	<input type="checkbox"/>
990 Big Sur	990 Big Sur Bedroom	990 Bed	74	<input type="checkbox"/>
995 Magnolia	995 Magnolia Bedroom	995 Bed	75	<input checked="" type="checkbox"/>
385 Metro	385 Metro Occasional	385 Occ	76	<input type="checkbox"/>
390 Wakefield I	390 Wakefield Inn Occasional	390 Occ	77	<input type="checkbox"/>

Select All Select None

Bar Code Inventory Reconciliation Results BatchID 1728

LocationNumber	WH1	LocationDescription	Warehouse 1				
BinNumber	WH1						
MaterialNumber	MaterialDescription	LastDate	Sellable	NotSell	Scanned	Sell Diff	Total Diff
01-120-0	Rect. Cknl Table	2/15/2004	0	0	2	2	2
01-120-1	End Table	2/15/2004	0	0	2	2	2
01-140-1	Mirrored, Glass End Table	2/15/2004	0	0	1	1	1
01-140-8	Mirrored, Glass Sofa Table	2/15/2004	0	0	1	1	1
LocationNumber	WH2	LocationDescription	Warehouse 2				
BinNumber	WH2						
MaterialNumber	MaterialDescription	LastDate	Sellable	NotSell	Scanned	Sell Diff	Total Diff
01-120-0	Rect. Cknl Table	2/15/2004	0	0	1	1	1
01-120-1	End Table	2/15/2004	0	0	1	1	1
109-101	Sturbridge Village Ladder Back Side Chair	2/15/2004	198	0	0	-198	-198

Make Labels

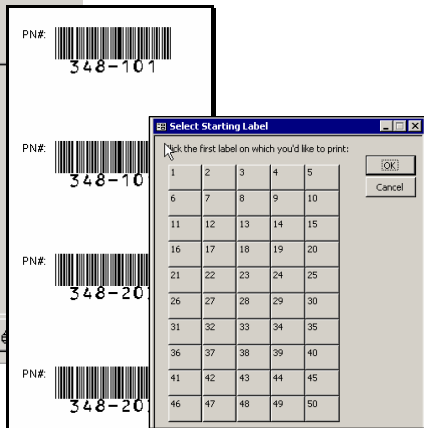
Material Number: [dropdown]
 Quantity: 1 Add Clear All

Material Number	Material Description
348-101	John Adams Side Chair
348-101	John Adams Side Chair
348-203T	John Adams Double Ped Table Top
348-203T	pp
348-203T	pp

Print Bin Labels

Start With: [dropdown]
 End With: [dropdown]

Label Size
 Roll (2.25 x 1.25)
 Laser (2.625 x 1)
 Medium (5.5 x 4.25)
 Large (8.5 x 11)



Bar Code Stock Labels

- “ Print single label on demand
- “ Prepare list of labels to print from all materials
- “ Label Size, information and layout dependent on needs
- “ Print labels for PO, ROG
- “ Print Bin Labels